

SWASAMRUTHAM

Breath easy!

- ✓ Reduces the inflammation and Constriction of the bronchi
- ✓ Reduces bronchial mucosal irritation
- ✓ Alleviates allergic respiratory disorders
- ✓ Clears the airways by promoting expectoration
- ✓ Helps to sooth irritating coughs
- ✓ Relieves in breathing difficulty
- ✓ Prevents (asthmatic) attack

Composition:

Each 10ml contains

Kungumapu	0.10mg	Badami	0.50mg
Lavangam	0.50mg	Navacharam	0.10mg
Adadhoda	0.50mg	Sukku	0.50mg
Karpuram	0.10mg	Thaleshpathrai	0.50mg
Thippaili	0.75mg	Sirunagappu	0.50mg
Jathipathrai	0.50mg	Nellika	0.50mg
Mazhikai	0.50mg	Thanika	0.50mg
Melagu	0.50mg	Pattalangam	0.50mg
Kadukai	0.50mg	Kasturi	0.10mg
Athimadhuram	0.50mg	Sugar	Qs
Goro Cham	0.10mg		

Indications:

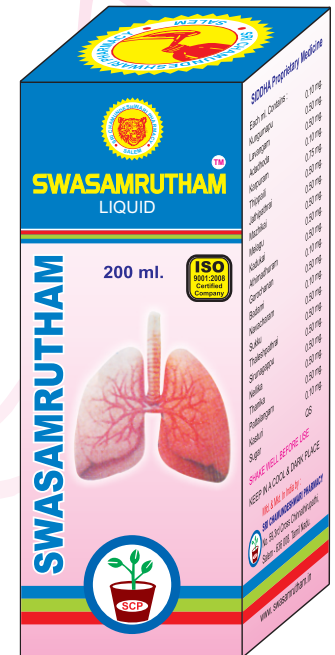
Bronchitis, Allergy, Sinusities, Eosinophilla, Sneezing, Wheezing, Cold, Cough, Running nose.

Dosage: Twice a day before or after food.

Adults : 10-15ml

Children : 3-5ml

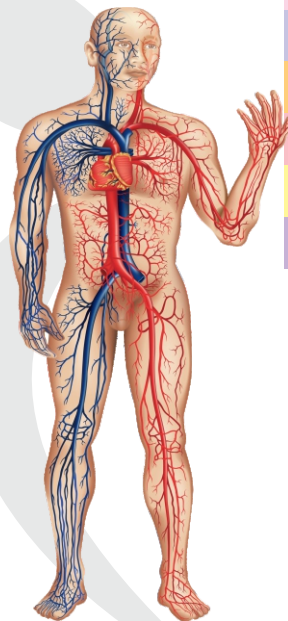
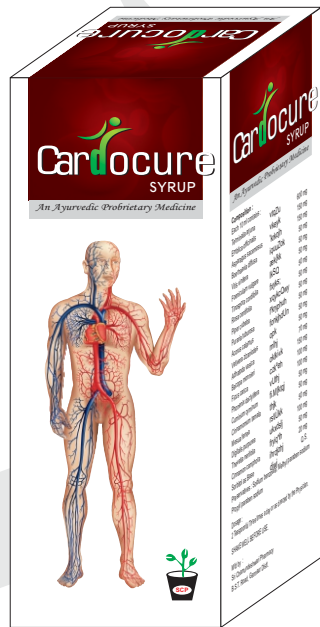
Packing : 200/100ml



Cardocure

Heart care for you!

syrup



- ✓ Excellent cardiac tonic
- ✓ Hyperlipidamia coronary artery disease(blockage of coronary arteries)
- ✓ Sleep apenia & varicose veins
- ✓ Promotes effective cardiac function
- ✓ Strengthens heart muscles
- ✓ Used in angina pectoris tachycardia, cardiac arrhythmia.
- ✓ Ischemic heart disease post myocardial infarction
- ✓ Stabilizes the lipid profile
- ✓ Hypertension.

Indications:

Hyper tension, Cardiac arrhythmia, Ischemic heart disease post myocardial infarction. Hyperlipidamia coronary artery disease (Blockage of Coronary arteries), Sleep apenia & Varicose.

Dosage: 10 to 15 ml twice or thrice a day or as directed by the physician.

Packing : 300ml

Each 10ml contains

Terminalia arjuna	600mg
Emblica officinalis	150mg
Asparagus racemosus	150mg
Boerhaavia Diffusa	50mg
Vitis vinifera	50mg
Foeniculum vulgare	50mg
Tinospora cordifolia	50mg
Rosa centifolia	50mg
Piper cubeba	50mg
Puraria tuburosa	50mg
Acorus calamus	50mg

Composition:

Vetiveria zizanioides	50mg
Adhatoda vasica	70mg
Bacopa monnieri	150mg
Ficus carica	100mg
Phoenix dactylifera	100mg
Cuminum cyminum	50mg
Cinnamomum tamala	50mg
Mesua ferrea	50mg
Digitalis purpurea	100mg
Thevetia neriifolia	50mg
Cinnamomum camphora	20mg

Ulsamrutham *syrup*

Relieves from gastric ulcer!

- ✓ Acts in both acid peptic and non –ulcer dyspepsia
- ✓ Protects the gastric mucosa from oxidative damage
- ✓ Accelerates ulcer healing process
- ✓ Eliminates gas from the stomach



Composition:

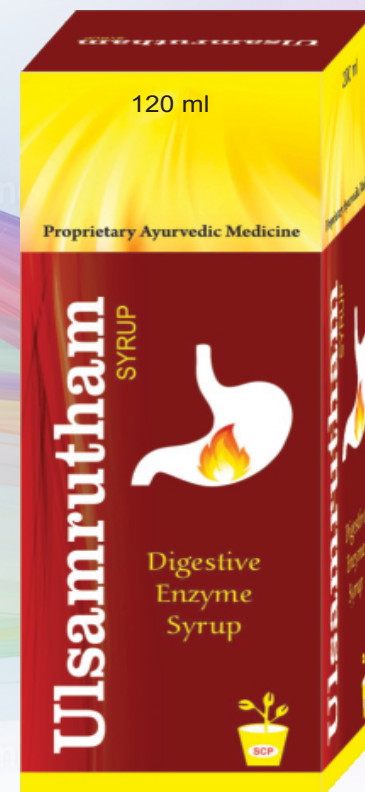
Each 15ml contains

Plumbago zeylanca	200mg	Piper nigrum	20mg
Tracyspermum ammi	250mg	Cuminum cyminum	100mg
Foeniculam vulgare	200mg	Glycyrrhiza glabra	100mg
Mentha spicata	300mg	Emblica officinalis	300mg
Zingiber officinale	150mg	Unaqua sodium chloride	15mg
Cyperus rotundus	350mg	Soda bicarbonate	5mg
Coriandrum sativum	100mg	Sugar	Qs
Syzygium aromaticum	20mg		

Indications:

Peptic ulcer, hyper acidity, Reflux Ocesophagitis, heat burns, Gastritis.

Dosage: 10 to 15 ml twice or thrice a day or as directed by the physician.



Packing : 120ml

LIVOAMRITHUM *SYRUP*

Protects the liver!

- Stimulates and restores liver function efficiency
- Excellent hepatoprotective rasayana combination
- Protects liver from toxins and chemicals
- Improves appetite and digestion
- Facilitates regeneration of liver cells



Composition:

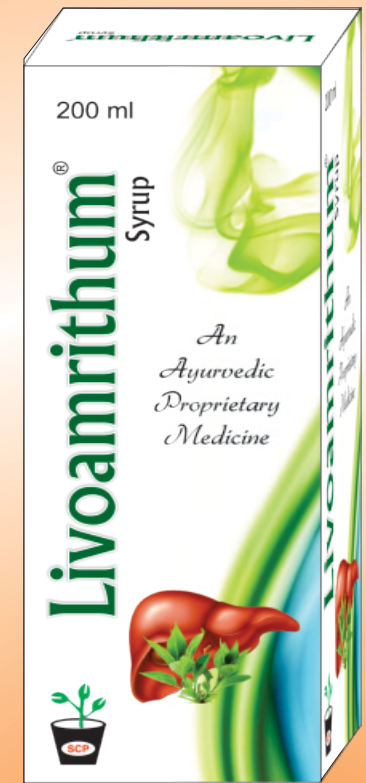
Each 10ml syrup contains

Apium leptophyllum	200mg	Terminalia chebula	200mg
Eclipta Alba	250mg	Terminalia bellerica	200mg
Emblia ribes	150mg	Cyperus rotundus	200mg
Tephrosia purpurea	250mg	Zingiber officinale	50mg
Solanum nigrum	100mg	Mentha spicata	200mg
Boerhaavia diffusa	200mg	Chichorium endivia	200mg
Phyllanthus niruri	200mg	Sugar	Qs
Emblica officinalis	250mg		

INDICATIONS: JAUNDICE, VIRAL HEPATITIS, TOXIC HEPATITIS, DRUG INDUCED HEPATITIS, ALCHOLIC HEPATITIS, DYSFUNCTION OF A GALL BLADDER PANCREATITI, And LOSS OF APPETITE & INDIGESTION.

Dosage: Adults : 10-15ml twice a day with water.

Children : 3-5ml twice a day with water. Or as directed by the physician.



Packing : 200 ml

HEMAMRUTHAM SYRUP

HEALTH CARE

Composition:

Each 10ml syrup contains

Asparagus racemosus	Satavur	150mg
Withania semnifera	Ashwagandha	150mg
Boerhaavia diffusa	Santhi	200mg
Sphacranthus indicus	Visnukkarantai	150mg
Rubia Cordifolica	Manjitti	100mg
Puraria tuburosa	Indian kudzu	200mg
Eclipta oficalinalis	Bhringraj	200mg
Vitis vinifera	Grape vine	300mg
Spinacia oleracea	Spinach	200mg
Embilica officinalis	Amla	200mg
Sugar	Sugar	

INDICATIONS:

Protects the immune system Helps combat the effects of stress Improves learning.

Memory.

Reaction time.

Reduces anxiety and depression without causing drowsiness.

Enhances sexual potency for both men and women.

Natural antioxidant properties.

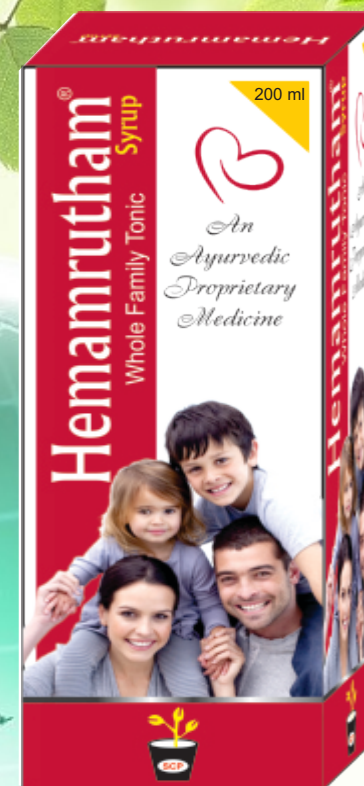
Loss of appetite, Loss of Calcium.

Vitamin C and Iron.

Increase Blood Count.

Dosage :

10-15 ml twice Daily or as directed by the physician.



Packing : 200 ml



S-NANO PLUS SYRUP

Eye care

- ✓ Improves eye sight.
- ✓ Irritation and Reduce eye strain.
- ✓ Stop headache due to vision problem.
- ✓ Delays the onset of cataract.
- ✓ It stops safed motia etc.

Composition:

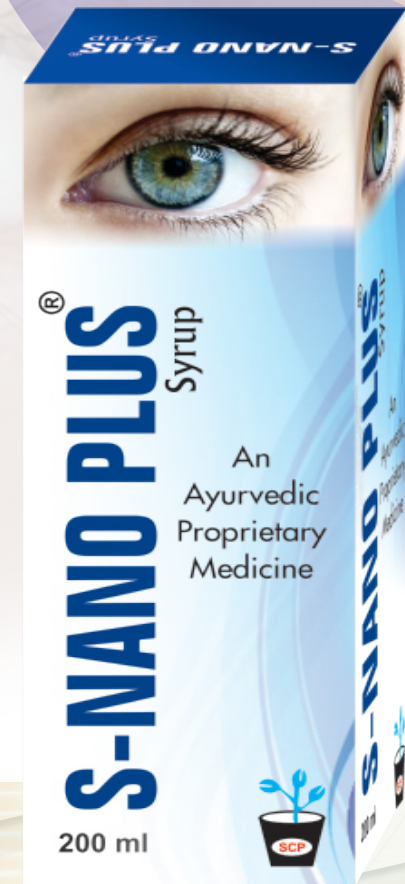
Each 10ml syrup contains

Celatrus paniculata	150mg	Vitis vinifera	100mg
Terminalia chebula	150mg	Emblica officinalis	300mg
Phyllanthus niruri	200mg	Convolvulus pluricaulis	200mg
Asparagus racemosus	150mg	Aloe barbadensis	150mg
Withania somnifera	150mg	menthe spicata	100mg
Nardostachys jatamansi	150mg	Ocimum sanctum	100mg
Curculigo orchioides	150mg	Foeniculam vulgare	100mg
Elettaria cardamomum	25mg	Sugar	Qs

INDICATIONS: Improves eye sight. Irritation and Reduce eye strain. Stop headache due to vision problem.

Dosage: Adults : 10-15ml thrice a day.

Children : 5-10ml thrice a day or as advised by the physician.



Packing : 200 ml

F-PUSHPI SYRUP

WOMEN CARE

Composition:

Each 10ml syrup contains

Anlthum sowa	Indian oil	50mg
Symplocos racemosa	lodhra	250mg
Saraca indica	asoka	500mg
Asparagus rasemosus	satavari	200mg
Syzygium cumini	javaplum	200mg
Woodfordia fruticosa	dhataki	250mg
Macuna puriens	ponnai kalividai	150mg
Scinda psus officinalis	gajapippali	150mg
Ayurvedic comp	Ayurvedic comp	200mg
Emblica officinalis	amla	200mg
Acacia nilotica	karuvelai	150mg
Zingiber officianale	zinger	50mg
Quercus infectoria	manjakani	100mg
Sugar		q.s

INDICATIONS:

Useful in leucorrhoea.
Dysmenorrhoea.
Irregular menstruation.
Menstrual Disorder
Low Back Pain.
Leucorrhoea.
Pre-menstrual Tension.
Menorrhagia.
Pelvic Inflammatory Disorder.



Packing : 200 ml

Dosage : 10-15 ml Twice or Thrice a day
or as advised by the physician.



ARTHO ONE + syrup

Rheumatologic care!

- ✓ Useful in osteo-arthritis.
- ✓ Its improves elasticity of blood vessels and improves circulation.
- ✓ Useful to end rheumatic and neuralgic pains arising from syphilis origin Or uterine affections.
- ✓ Effectively functioning against arthralgia, circvicular and lumber spondilosis, Frozen shoulder and fibrositis.

Composition:

Each 10ml syrup contains

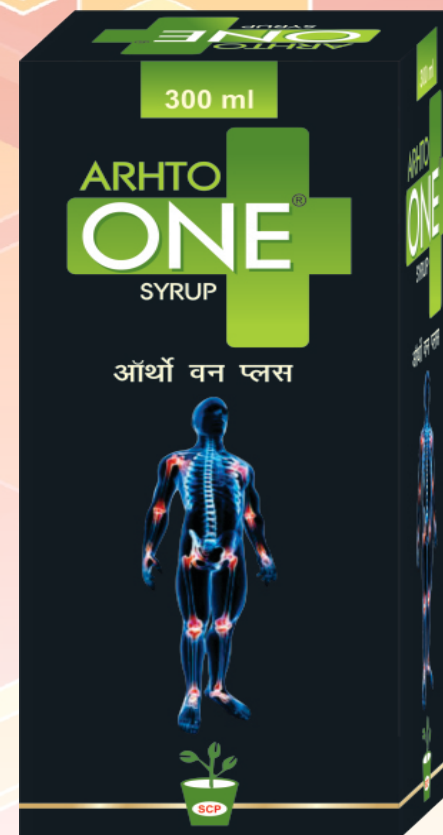
Vitex nigundo	200mg
Commifora mukul	200mg
Withania somnifera	150mg
Trigonella foenum-graecum	50mg
Pluchea lanceolata	50mg
Asphaltum (purified)	100mg
Boswellia serrata	50mg
Sida cordifolia	30mg
Aloe barbadensis	100mg
Eucalyptus globules	50mg



Indications:

**RHEUMATOID ARTHRITIS, FIBROSITIS SPONDYLITIS, SPRAINS AND STRAINS
JOINT PAIN, BACK PAIN, DUETO PROLAPSED, INTERVERTERBRAL DISC.**

Dosage: Adults : 15-20ml thrice a day.
Children : 5-10ml thrice a day.
Or as directed by the physician



Packing : 300 ml

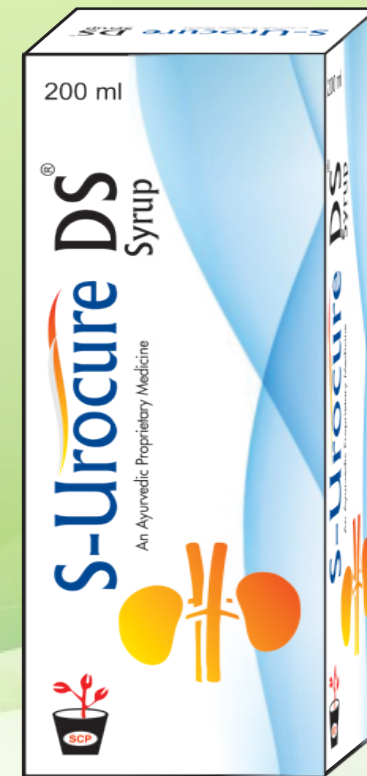
S-UROCURE-DS SYRUP

URINARY CARE

Composition:

Each 10ml syrup contains

Asphaltum (purified)	shilajit	150mg
Shwet parpati (br)	mineral salt	150mg
Raphanus sativus	radish	150mg
Sodi chloridum		75mg
Impure carbonite		75mg
Piper cubeba	java pepper	100mg
Boerhaavia diffusa	punarnava	500mg
Tribulus terrestries	tikundi	450mg
Parmelia periaata	ashmapushpa	400mg
Cratacva nurvala	adicharanam	450mg
Dotichos biflorus	kulatha [kolln]	400mg
Bergenia ligulata	pashanabheda	100mg
Butea monosperma	kincukam	100mg
Mimosa pudica lajjalu		100mg
Solanvm nigrum	makoi	100mg
Cucumis utissimus	thumattikai[melon]	100mg
Berberis aristata	kasturi majal	100mg



Packing : 200 ml

INDICATIONS:

Dysuria.
Burning Micturition.
Oedema.
Generalized Anasarca No-Specific
U.T.I's Other Urinary disorders.
Painful slow and frequent urination.

Dosage : 10-15 ml Twice or Thrice a day

Child : 3-5 m twice a day

or as advised by the physician.